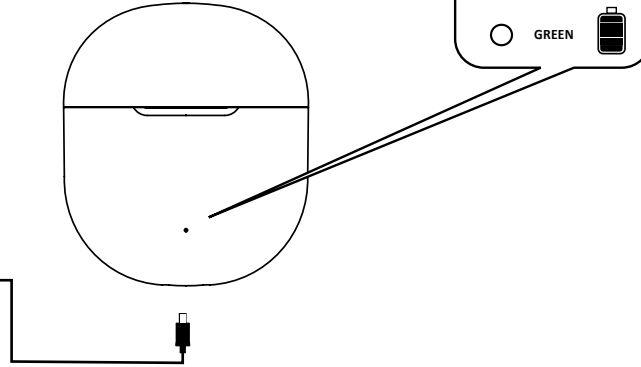
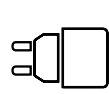
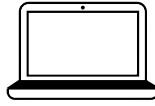
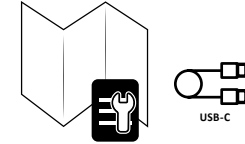
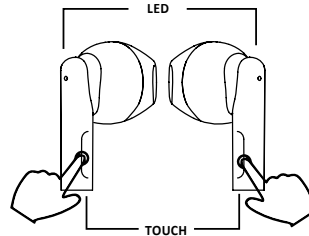
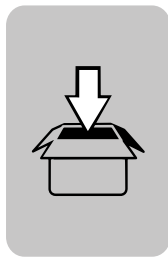


BREEZE

BTMSTWSBREEZEK
BTMSTWSBREEZEW
BTMSTWSBREEZEP
BTMSTWSBREEZEB



EN - Technical specifications:

Bluetooth® / version: 5.4
Supported profiles: HSP - HFP - A2DP - AVCP
Range / metres: 10
Bluetooth® Frequency Range / Mhz: 2402-2480
Battery Voltage / Volts: 3.7
Battery capacity / mAh: 30
Charging Case Battery Capacity / mAh: 300
USB-C port Voltage (V) / Volts: 5
USB-C port current (A) / Ampere: 0.2
Maximum EIRP: 9dBm
Earphone charging / hours/ approx.: 1
Talk Time / hours/ approx.: 3.5
Play Time / hours/ approx.: 4.5
Charging Case / hours/ approx.: 1.5
Weight / grams: 29

IT - Specifiche tecniche:

Bluetooth® / versione: 5.4
Profili supportati: HSP - HFP - A2DP - AVCP
Portata / metri: 10
Bluetooth® Frequenza Range / Mhz: 2402-2480
Batteria Voltage / Volt: 3.7
Batteria Capacità / mAh: 30
Charging Case Battery Capacity / mAh: 300
USB-C port Voltage (V) / Volt: 5
USB-C port current (A) / Ampere: 0.2
Maximum EIRP: 9dBm
Ricarica auricolari / ore-circa: 1
Talk Time / ore-circa: 3.5
Play Time / ore-circa: 4.5
Ricarica Charging Case / ore-circa: 1.5
Peso / grammi: 29

FR - Caractéristiques techniques :

Bluetooth® / version : 5.4
Profils supportés : HSP - HFP - A2DP - AVCP
Portée / mètres : 10
Bluetooth® Gamme de fréquences / Mhz : 2402-2480
Tension de la batterie / Volt : 3.7
Capacité de la batterie / mAh : 30
Capacité de la batterie du Charging Case / mAh : 300
Tension du port USB-C (V) / Volt : 5
Courant du port USB-C (A) / Ampère : 0.2
PIRE max : 9dBm
Recharge des écouteurs / heures (environ) : 1
Autonomie en conversation / heures (environ) : 3.5
Autonomie en lecture / heures (environ) : 4.5
Recharge du Charging Case / heures (environ) : 1.5
Poids / grammes : 29

DE - Technische Daten:

Bluetooth® / Version: 5.4
Unterstützte Profile: HSP - HFP - A2DP - AVCP
Reichweite / Meter: 10
Bluetooth®-Frequenzbereich / Mhz: 2402-2480
Akkuspannung / Volt: 3.7
Akkukapazität / mAh: 30
Charging Case Akkukapazität / mAh: 300
USB-C-Anschluss Spannung (V) / Volt: 5
USB-C-Anschluss Strom (A) / Ampere: 0.2
Maximum EIRP: 9dBm
Aufladen Headset / Stunden ca.: 1
Gesprächszeit / Stunden ca.: 3.5
Musikwiedergabezeit / Stunden ca.: 4.5
Aufladen Charging Case / Stunden ca.: 1.5
Gewicht / Gramm: 29

ES - Especificaciones técnicas:

Bluetooth® (versión): 5.4
Perfiles admitidos: HSP - HFP - A2DP - AVCP
Alcance (metros): 10
Rango de frecuencia Bluetooth® (MHz): 2402-2480
Voltaje de la batería (volts): 3.7
Capacidad de la batería (mAh): 30
Capacidad de la batería del Charging Case (mAh): 300
Voltaje del puerto USB-C (volts): 5
Corriente del puerto USB-C (amperios): 0.2
Potencia isotrópica radiada equivalente máxima (dBm): 9dBm
Recarga de los auriculares (horas aprox.): 1
Tiempo de conversación (horas aprox.): 3.5
Tiempo de reproducción (horas aprox.): 4.5
Recarga del Charging Case (horas aprox.): 1.5
Peso (gramos): 29

TR - Teknik özellikler:

Bluetooth® / sürümü: 5.4
Desteklenen profiller: HSP - HFP - A2DP - AVCP
Kapsama alanı / metre: 10
Bluetooth® Frekans Aralığı / Mhz: 2402-2480
Pili Voltajı / Volt: 3.7
Pili Kapasitesi / mAh: 30
Charging Case Pili Kapasitesi / mAh: 300
USB-C port Gerilimi (V) / Volt: 5
USB-C port akımı (A) / Amper: 0.2
Maksimum EIRP: 9dBm
Kulak içi kulaklıkların yeniden şarj edilmesi / saat-yaklaşık: 1
Konuşma Süresi / saat-yaklaşık: 3.5
Çalma Süresi / saat-yaklaşık: 4.5
Charging Case Yeniden Şarj Edilmesi / saat-yaklaşık: 1.5
Ağırlık / gram: 29

NL - Technische kenmerken:

Bluetooth® / versie: 5.4
Ondersteunde profielen: HSP - HFP - A2DP - AVCP
Bereik / meter: 10
Bluetooth® Frequentiebereik / Mhz: 2402-2480
Batterijspanning / Volt: 3.7
Batterijcapaciteit / mAh: 30
Batterijcapaciteit oplaadcase / Volt: 300
Spanning USB-C-poort (V) / Volt: 5
Stroomsterkte USB-C-poort (A) / Ampère: 0.2
Maximum EIRP: 9dBm
Oplaatdijd headset / uur-circa: 1
Tijdsduur in gesprek / uur-circa: 3.5
Afspeeltijd / uur-circa: 4.5
Oplaatdijd oplaadcase / uur-circa: 1.5
Gewicht / gram: 29

FI - Tekniset tiedot:

Bluetooth® / versio: 5.4
Tuetut profiilit: HSP - HFP - A2DP - AVCP
Kantavuus / metri: 10
Bluetooth® taajuusalue / Mhz: 2402-2480
Akun jännite / Voltti: 3.7
Akun kapasiteetti / mAh: 30
Charging Case -latausotteen akun kapasiteetti / mAh: 300
USB-C -portin jännite (V) / Voltti: 5
USB-C -portin virta (A) / Ampeeri: 0.2
Maksimi EIRP: 9dBm
Kuulokkeiden lataaminen / tuntia-noin: 1
Puhe aika / tuntia-noin: 3.5
Musikinkuuntelu aika / tuntia-noin: 4.5
Charging Case -latausotteen lataaminen / tuntia-noin: 1.5
Paino / grammaa: 29

SV - Tekniska specifikationer:

Bluetooth® / version: 5.4
Profiler som stöds: HSP - HFP - A2DP - AVCP
Räckvidd / meter: 10
Bluetooth® frekvensvidd / Mhz: 2402-2480
Batterispanning / Volt: 3.7
Batterikapacitet / mAh: 30
Batterikapacitet for Charging Case / mAh: 300
USB-C-portens spänning (V) / Volt: 5
USB-C-portens ström (A) / Ampere: 0.2
Maximal EIRP: 9dBm
Laddning av hörlurar / timmar cirka: 1
Samtalstid / timmar cirka: 3.5
Speltid / timmar cirka: 4.5
Laddning av laddningsfodral / timmar cirka: 1.5
Vikt / gram: 29

DA - Tekniske data:

Bluetooth® / version: 5.4
Understøttede profiler: HSP - HFP - A2DP - AVCP
Rækkevidde / meter: 10
Bluetooth® frekvensområde / Mhz: 2402-2480
Batterispanning / Volt: 3.7
Batteriets kapacitet / mAh: 30
Batterikapacitet charging case / mAh: 300
USB-C-portens spænding (V) / Volt: 5
USB-C-portens strøm (A) / Ampere: 0.2
Maksimum EIRP: 9dBm
Opladning af høretelefoner / timer-cirka: 1
Taletid / timer-cirka: 3.5
Afspilningstid / timer-cirka: 4.5
Opladning af Charging Case / timer-cirka: 1.5
Vægt / gram: 29

NO - Tekniske spesifikasjoner:

Bluetooth® / versjon: 5.4
Støttede profiler: HSP - HFP - A2DP - AVCP
Rækkevidde / meter: 10
Bluetooth® frekvensområde / Mhz: 2402-2480
Batterispenning / Volt: 3.7
Batterikapacitet / mAh: 30
Ladeutl Batterikapacitet (V) / Volt: 300
Spennning USB-C-port (V) / Volt: 5
Strømstyrke USB-C-port (A) / Ampere: 0.2
Maks. EIRP: 9dBm
Lade aretelefoner / timer-ca.: 1
Taletid / timer-ca.: 3.5
Spilletid / timer-ca.: 4.5
Lade charging case / timer-ca.: 1.5
Vekt / gram: 29

